

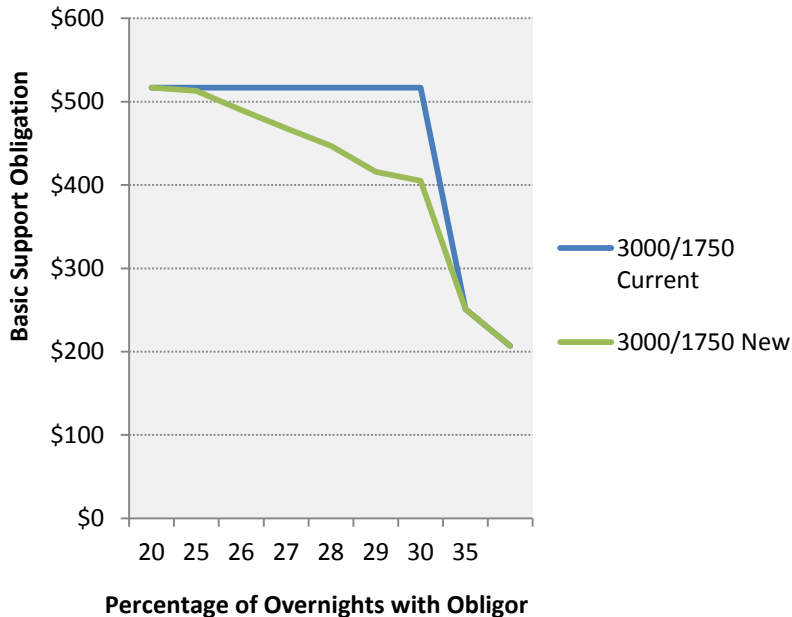
Child Support Guidelines Advisory Committee

Impact of the “Cliff Effect”

The *Cliff Effect* refers to the precipitous drop in the calculated child support obligation when shared physical custody by the support obligor reaches 35% of the overnights in a calendar year.

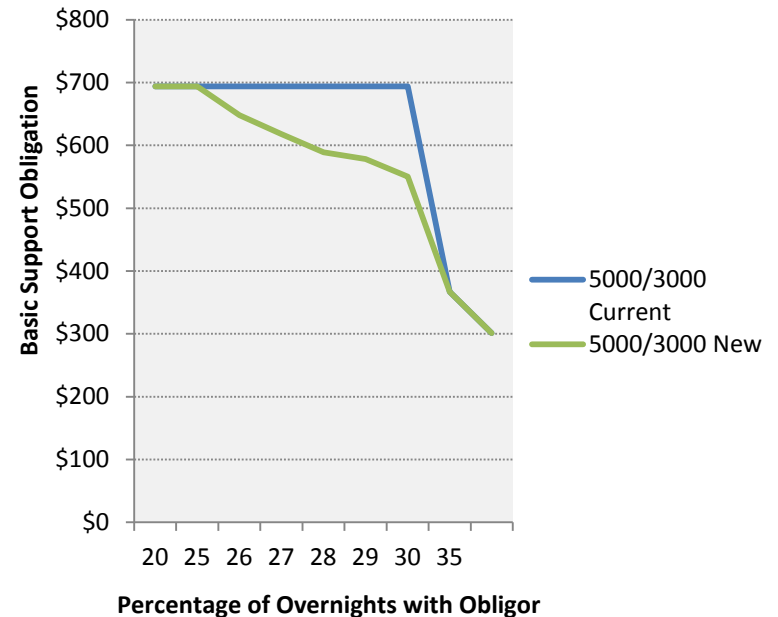
Obligation by Percent of Overnights

Obligor Income=\$3,000
Other Parent Income=\$1,750



Obligation by Percent of Overnights

Obligor Income=\$5,000
Other Parent Income=\$3,000



The blue line shows the precipitous drop the cliff effect has on a child support obligation, while the green line shows the gradual decline resulting from the proposed shared physical custody adjustment.

Child Support Guidelines Advisory Committee

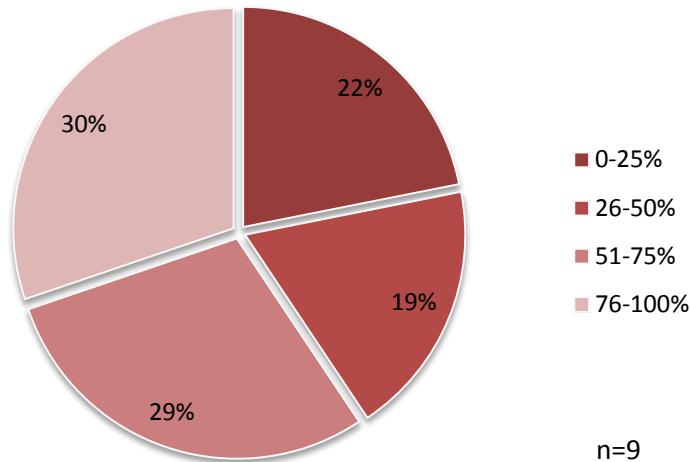
Impact of the “Cliff Effect” (con’t)

- Guidelines Committee Surveyed the following:
 - 27 Title IV-D Attorneys
 - 96 Judges & Magistrates
 - 32 Private Family Law Bar
- Judiciary and Private Bar overwhelmingly agree parental conflict is present in litigation on the issue and this conflict has an adverse impact on the children involved.
- Title IV-D Attorneys agree a change is necessary, while not frequently finding the issue in their child support litigation:
 - IV-D cases involve unrepresented litigants who have not been made aware of the issue by an attorney.
 - Often, litigants do not have formalized custody/visitation agreements so frequently calculations are based on sole custody/worksheet A for the parent that usually has the child/ren.

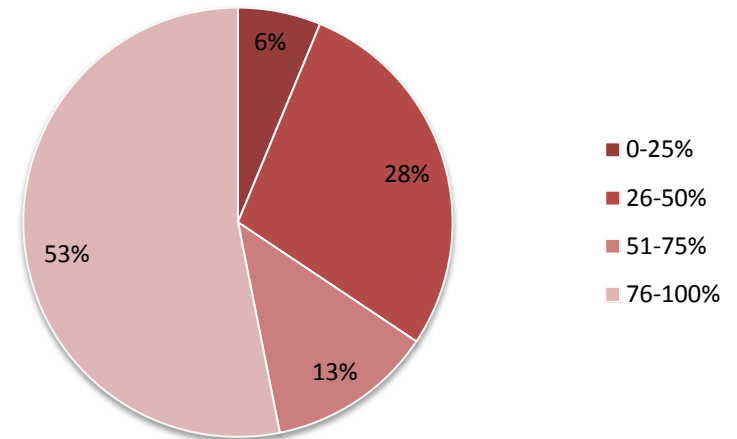
Child Support Guidelines Advisory Committee

Impact of the “Cliff Effect” (con’t)

Judiciary: Percent of Cliff Effect Cases - Adverse Impact



Private Bar: Percent of Cliff Effect Cases - Adverse Impact



All survey subgroups overwhelmingly agreed that a gradual effect could improve any adverse impact on litigation:

- 78% of Judges and Magistrates;
- 94% of private bar attorneys; and
- 81% of IV-D attorneys.